

## NG·TEST<sup>®</sup>/IgG-IgM COVID-19

All-in-One

The easy-to-use, «All-in-One» serological test for the qualitative detection of anti-SARS-CoV-2 antibodies (IgM & IgG) (COVID-19).



### FAST

Get results in a few minutes. No need to transport the biological sample to a laboratory. Easy to read results.



### RELIABLE

Detection of IgM & IgG to SARS-CoV-2 (detection of specific antibodies to SARS-CoV-2). Consistent with the standard technique (RT-PCR), the clinical features, and the expected window periods for that assay type. Positive predictive value of the test = 100%.



### EASY TO USE

Any healthcare professional can easily use this single-use test. No additional equipment is required : «All-in-One» device including one lancet and one blood collection device for maximum safety and convenience.

### POSSIBLE PROFESSIONAL USES :



EMERGENCY DEPARTMENTS



LABORATORIES



HOSPITALS



PRIVATE HOSPITALS



MEDICAL FACILITIES

NURSING HOMES...



Epidemiological  
monitoring



Screening

## PERFORMANCES :

**NG•TEST® IgG-IgM COVID-19** was assessed<sup>1</sup> by **Bicêtre Hospital** (bacteriology and hygiene department) and **Paul Brousse Hospital** (virology department), AP-HP. Paris Saclay, University, France. The test results were compared with the results obtained with the standard method (RT-PCR).

	Number of days after the onset of the symptoms		
	6 / 10 days	11 / 15 days	> 15 days
<b>SENSITIVITY</b>	41,2% (22,8 - 63,1%)	70,6% (44,0 - 88,6%)	<b>100%</b> (56,1 - 100%)
<b>SPECIFICITY</b>	<b>100%</b> (85,0% - 100%)	<b>100%</b> (85,0% - 100%)	<b>100%</b> (85,0% - 100%)
<b>NPV</b>	66,7% (50,3% - 80,0%)	84,8% (67,3% - 94,3%)	<b>100%</b> (85,0% - 100%)
<b>PPV</b>	<b>100%</b> (65,5% - 100%)	<b>100%</b> (69,9% - 100%)	<b>100%</b> (56,1% - 100%)
	TP = 10 FN = 14 TN = 28 FP = 0	TP = 12 FN = 5 TN = 28 FP = 0	TP = 7 FN = 0 TN = 28 FP = 0

	Number of days after diagnosis using RT-PCR	
	1 / 3 days	4 / 8 days
<b>SENSITIVITY</b>	75,0% (21,9 - 98,7%)	80,8% (60,0 - 92,7%)
<b>SPECIFICITY</b>	<b>100%</b> (85,0% - 100%)	<b>100%</b> (85,0% - 100%)
<b>NPV</b>	96,6% (80,3% - 99,8%)	84,8% (67,3% - 94,3%)
<b>PPV</b>	<b>100%</b> (31,0% - 100%)	<b>100%</b> (80,8% - 100%)
	TP = 3 FN = 1 TN = 28 FP = 0	TP = 21 FN = 5 TN = 28 FP = 0

**NPV** : Negative Predictive Value **PPV** : Positive Predictive Value **TP** : True Positive **FN** : False Negative **TN** : True Negatif **FP** : False Positive.

<sup>1</sup> Dortet Laurent et al. Rapid Determination of SARS-CoV-2 Antibodies Using a Bedside, Point-of-Care, Serological Test; Lancet 2020; 20 April 2020. Preprint DOI: <http://dx.doi.org/10.2139/ssrn.3582814>

## NG•TEST® / IgG-IgM COVID-19

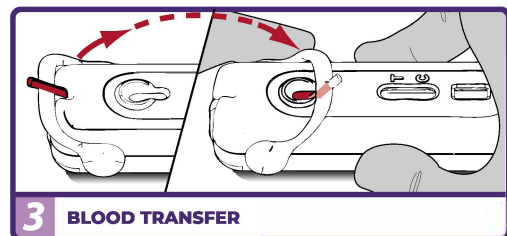
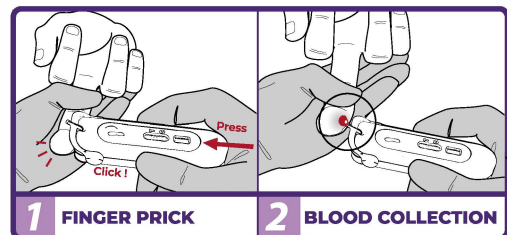
All-in-One

Blood collecting device (10 µL)

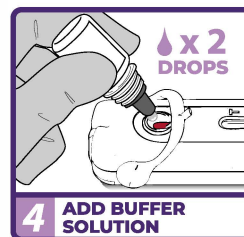


Patented

Lancet (finger prick)



INTERPRETATION OF THE RESULTS			
<b>NEGATIVE</b>		<b>POSITIVE</b>	
<b>INVALID</b>			



WAIT FOR TO GET RESULT



PRODUCT	SPECIMEN	FORMAT	PACKS	STORAGE & CONSERVATION	REF.
<b>NG•TEST® / IgG-IgM COVID-19</b> All-in-One	Whole blood, plasma, serum	«ALL-IN-ONE» System	5 Tests	4-30°C 24 months	NGB-COV-W23-102
<b>NG•TEST® / IgG-IgM COVID-19</b> Cassette	Whole blood, plasma, serum	KIT CASSETTE	20 Tests	4-30°C 24 months	NGB-COV-W23-004

